



**FLOW**

**ENGINEERED FOR  
EVERYDAY COMFORT**

USB HEADSET WITH MIC  
AND INLINE CONTROL



Axtel **FLOW** Stereo USB User Manual

# Volume Control for USB

## Structure



## Inline controller operation and functions:

### Blue Light

Incoming call: Blue light flashes.  
During a call: Blue light continuous.  
Connection completed: Blue light off.

### Answer/end call button

Press the button to answer/end a call

### Volume control

+ Volume up  
- Volume down

### Microphone mute button

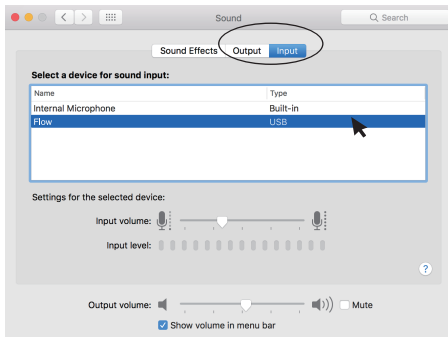
Press the button to mute the microphone.  
Press the button again to unmute the microphone.

# USB Connection Instructions

## Mac system:



1. Switch to System Preferences and Click 'Sound'



2. Click 'Input' or 'Output' to choose 'USB Axtel Flow' and click 'ok'.

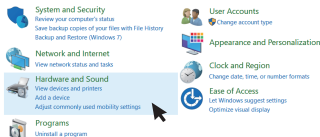
# USB Connection Instructions

## Windows system:

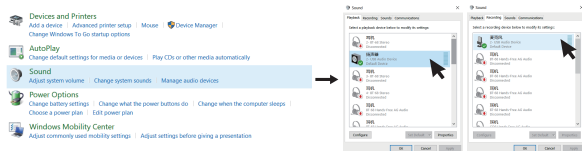
### 1. Switch to 'Control Panel' and click 'Hardware and Sound'

Adjust your computer's settings

View by: Category



### 2. Click 'Sound', then choose 'USB Audio Device' in 'Playback' and 'Recording'.



## Compatibility

Available for Computer system: Windows 7 /Windows 8/Windows XP/Windows Vista/Windows 10/Mac OS X or other system

Compliant with USB 2.0/3.0 Full-Speed operation and USB Audio Device class specification v 1.0

# Possible problems and solutions

---

## **\*Headset not working**

Please check the connection of the USB cable to the computer.  
Try another USB port on your computer.

## **\*No Sound from headset**

Please make sure the headset is unmute, if so, press the mute button  
to resume normal working state

## **\*Playing music doesn't work**

Please read USB connection instruction given above, then check if set as default  
audio device.

## Specification

---

### **Microphone Specification**

Transducer: Electret condenser  
microphone

Impedance: 400Ω@1KHz

Directivity: Omni - Directional

Frequency: 100Hz - 10000Hz

### **Speaker Specification**

Transducer: Moving coil dynamic speaker

Impedance: 32Ω ± 15%

Sensitivity: 119 ± 5dB@1KHz

Frequency respond: 20 ~ 20KHz

Rated input power: 5mW

## Included in the set

---

- Axtel Flow
- Protective pouch
- User Manual

## Warranty Information

---

Full two-year Axtel warranty.

